

THE TECHNOLOGY

Interzone 954 was developed for offshore oilrig leg protection. It is tough and hard, continues to cure underwater and is resistant to moisture in application. Slurry Blast surface preparation gives tremendous adhesion for the spray-applied coating.

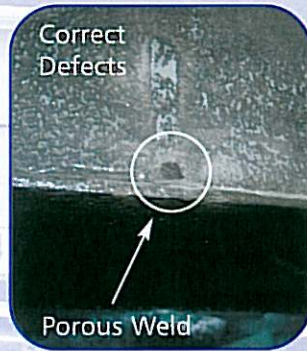
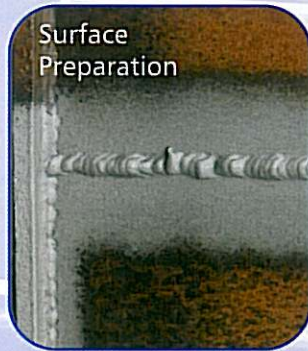
The Ultimate System.

Adhesion, Water Impermeability and Practical to apply in the real world. These are the key attributes of a metal protection coating and with Interzone 954 are achieved by molecular level engineering in selecting the size and type of molecules in the epoxy base, amine curing agent and surfactant modifiers.

THE PROCESS

*Lift out → Slurry Blast → Inspect → Correct any defects
Mask up and protect → Spray 1st coat → Spray 2nd Coat
Re anode → Touch up → Crane back into water → Away!*

KEY STAGES



THE PERFORMANCE

The Interzone 954 process is a premium treatment at £25/foot for sides and £40/foot for sides and bottom. Service life expectation is at least ten years thus giving a performance factor over blacking of 7 to 1 (see cost benefit literature). In Offshore Petrochem applications a service life of 20 years is routine.

THE BENEFITS

The Jalsea Marine Interzone 954 process is:

Tough + Hard – resists damage in a contact sport and will not appreciably blister or creep even if damaged. Epoxy filling between coats eliminates craters and restores a smooth hull. It provides a constant level of protection throughout - unlike blacking which deteriorates rapidly almost from day one. It gives true peace of mind and is largely a “fit and forget” solution to hull corrosion.

THE JMSL PROCESS

Jalsea Marine is run by professional chemical engineers. Our aim is to make available to the leisure Marine world hi-technologies proven in other fields (NASA, Petrochemical).

Our production line is designed for efficiency – Lift out – onto trailer – blast – under cover – weld – paint – lift back in. We can handle several boats at once and because we lift the boats bottom plates are properly treated. High velocity spray application bonds the Interzone 954 to the blast prepared keyed surface perfectly. We use electric compressors for quietness and wet blasting for minimal dust and noise.

THE CUSTOMER

At Jalsea Marine you may do your own work also. You may have a caravan here and relax while we do the work. You can often have a yard boat to explore the Weaver area while your work is being done. Talk to us – we are here to help.